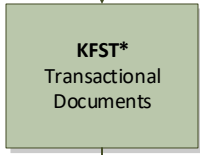
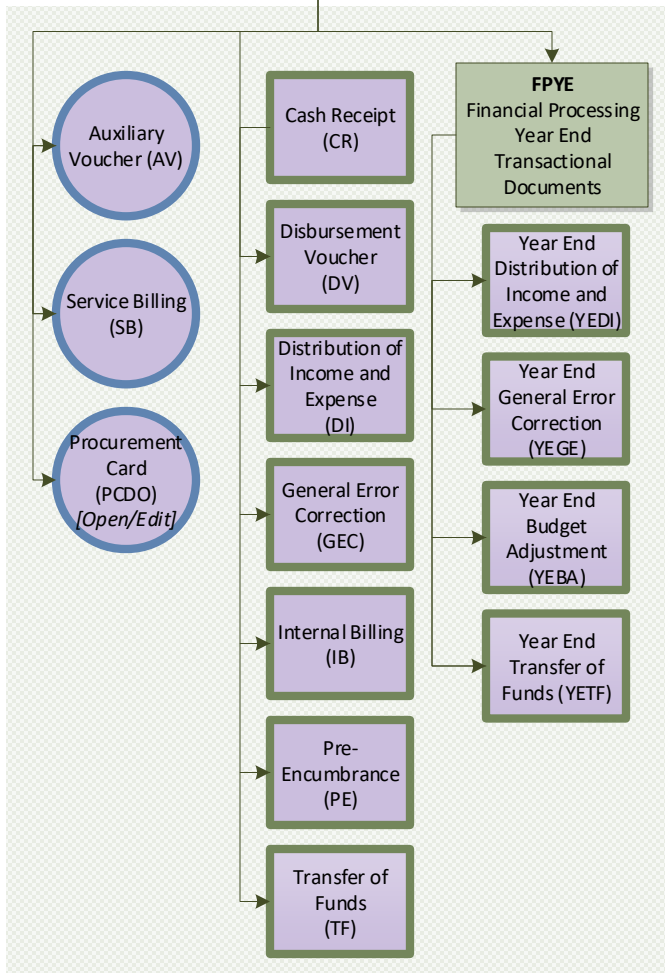
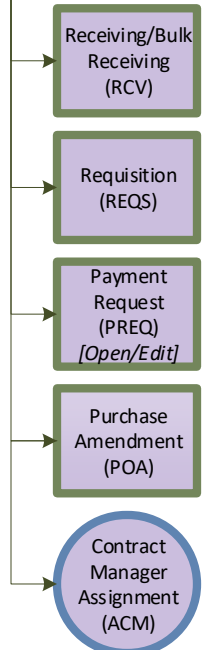
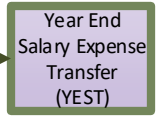
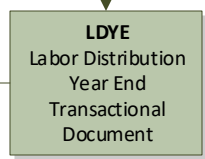
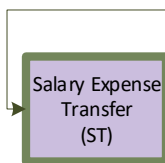
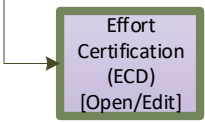
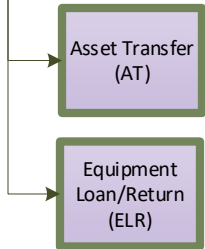
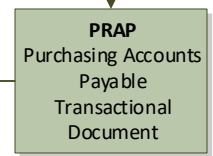
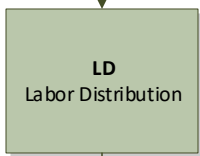
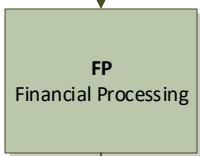
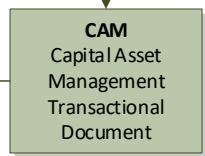


Document Hierarchy and Access Levels

* Organization Review at the KFS, KFST, and KFSM levels can only be FYI or Acknowledge.



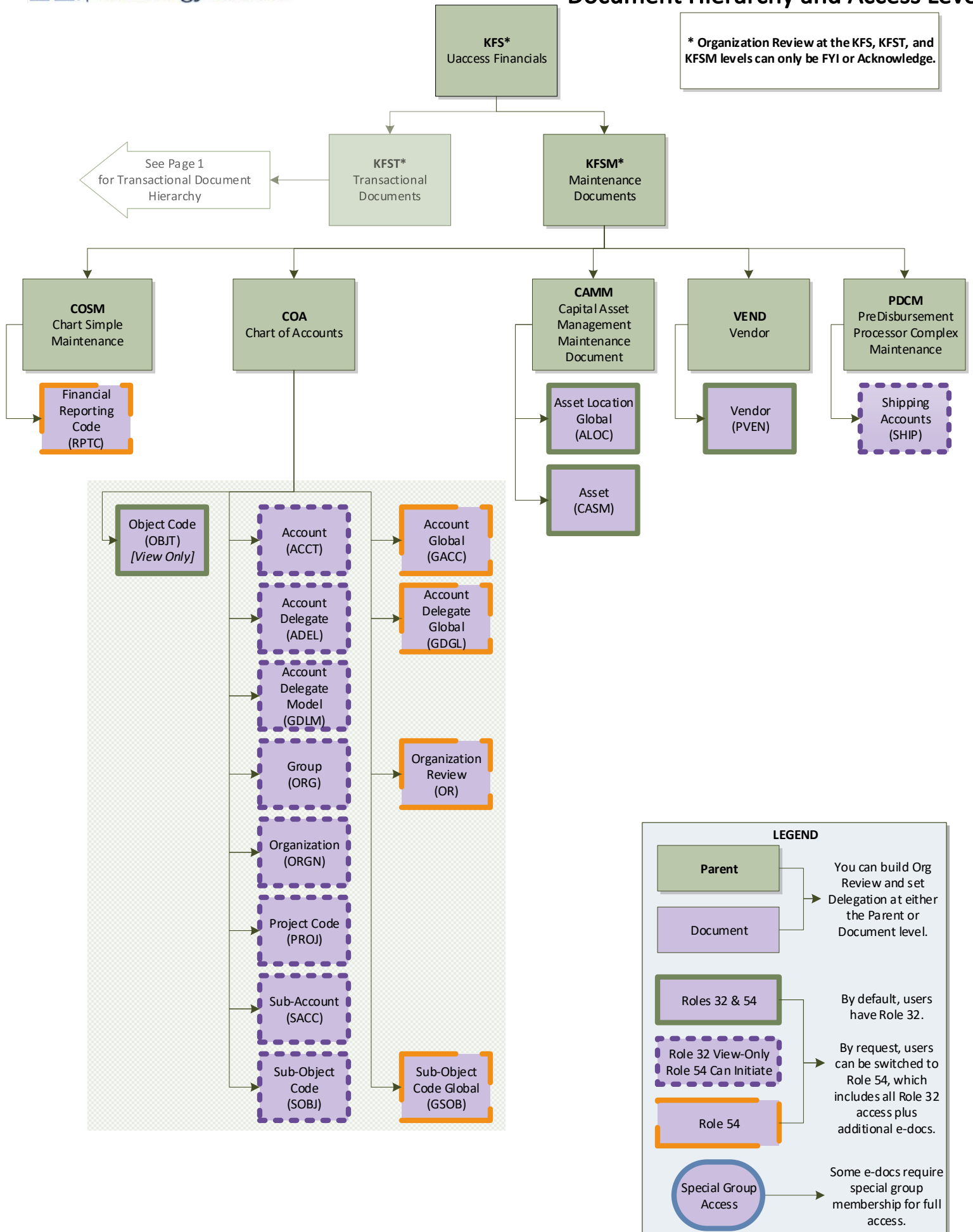
See Page 2 for Maintenance Document Hierarchy



LEGEND

- Parent** (Green box): You can build Org Review and set Delegation at either the Parent or Document level.
- Document** (Purple box):
- Roles 32 & 54** (Green box): By default, users have Role 32.
- Role 32 View-Only / Role 54 Can Initiate** (Dashed purple box): By request, users can be switched to Role 54, which includes all Role 32 access plus additional e-docs.
- Role 54** (Orange box):
- Special Group Access** (Blue circle): Some e-docs require special group membership for full access.

Document Hierarchy and Access Levels



Role 32 Access

Initiate

- Asset (CASM)
- Asset Location Global (ALOC)
- Cash Receipt (CR)
- Disbursement Voucher (DV)
- Distribution of Income and Expense (DI)
- General Error Correction (GEC)
- Internal Billing (IB)
- Pre-Encumbrance (PE)
- Receiving/Bulk Receiving (RCV)
- Requisition (REQS)
- Salary Expense Transfer (ST)
- *Transfer of Funds (TF)*
- Vendor (PVEN)
- Year End Budget Adjustment (YEBA)
- Year End Distribution of Income and Expense (YEDI)
- Year End General Error Correction (YEGE)
- Year End Transfer of Funds (YETF)
- Year End Salary Expense Transfer (YEST)

Open/Edit

- Effort Certification (ECD)
- Payment Request (PREQ)
- Procurement Card (with PCard Reconciler Group assignment) (PCDO)

View-Only

- Account (ACCT)
- Account Delegate (ADEL)
- Account Delegate Model (GDLG)
- Award (AWRD)
- Group (ORG)
- Object Code (OBJT)
- Organization (ORGN)
- Project Code (PROJ)
- Proposal (PRPL)
- Shipping Accounts (SHIP)
- Sub-Account (SACC)
- Sub-Object Code (SOBJ)

Role 54 Access

Differences between 32 and 54 indicated by *orange text*.

Initiate

- *Account (ACCT)*
- *Account Delegate (ADEL)*
- *Account Delegate Model (GDLG)*
- Asset (CASM)
- Asset Location Global (ALOC)
- Cash Receipt (CR)
- Disbursement Voucher (DV)
- Distribution of Income and Expense (DI)
- *Financial Reporting Code (RPTC)*
- General Error Correction (GEC)
- *Group (ORG)*
- Internal Billing (IB)
- *Organization (ORGN)*
- Pre-Encumbrance (PE)
- *Project Code (PROJ)*
- *Purchase Order Amendment (POA)*
- Receiving/Bulk Receiving (RCV)
- Requisition (REQS)
- Salary Expense Transfer (ST)
- *Shipping Accounts (SHIP)*
- *Sub-Account (SACC)*
- *Sub-Object Code (SOBJ)*
- *Transfer of Funds (TF)*
- Vendor (PVEN)
- Year End Budget Adjustment (YEBA)
- Year End Distribution of Income and Expense (YEDI)
- Year End General Error Correction (YEGE)
- Year End Transfer of Funds (YETF)
- Year End Salary Expense Transfer (YEST)
-

Open/Edit

- Effort Certification (ECD)
- Payment Request (PREQ)
- Procurement Card (with PCard Reconciler Group assignment) (PCDO)

View-Only

- Award (AWRD)
- Object Code (OBJT)
- Proposal (PRPL)